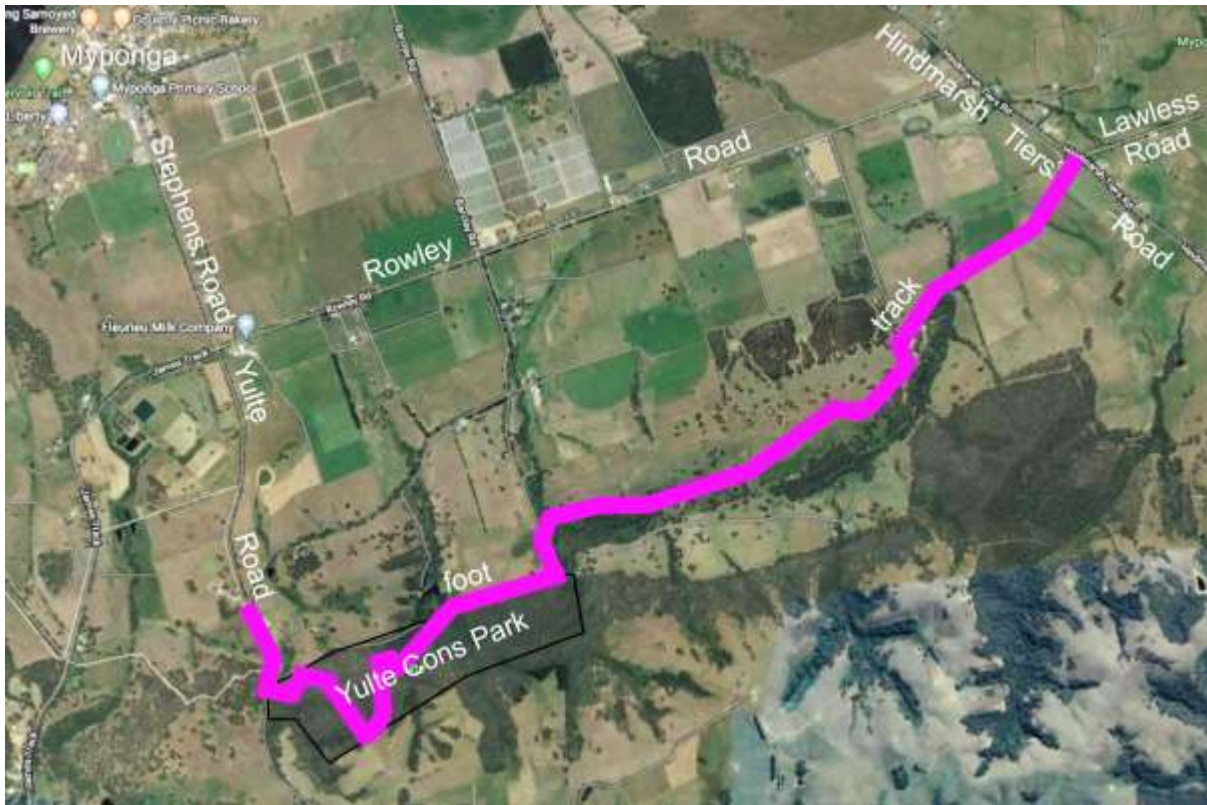


3. YULTE CONSERVATION PARK TO HINDMARSH VALLEY ROAD

Terrain: Easy to moderate; one difficult section

Distance: 5 km one way

This walk is part of the Heysen Trail (<https://heysentrail.asn.au/>), so you can follow the red and white trail markers. It is a continuation of the previous walk. Yulte Conservation Park is located 3 km south/southeast of Myponga; access via Stephens Road then Yulte Road. It is only accessible on foot, either from James Track and Yulte Road west of the park, or from Hindmarsh Valley Road to the east. The section through the conservation park is steep and difficult; the remainder of the walk is easy to moderate, traversing gentle open country.



© 2020 Normanville Natural Resource Centre
<https://www.nnrc.com.au/>